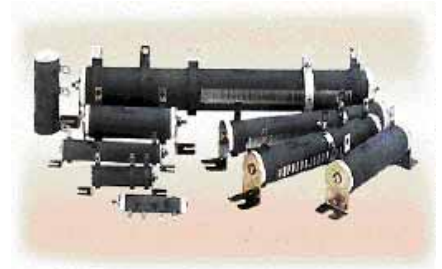




# Power Resistors

## DR Series - Nonflammable Fixed Power Resistors / 绕线功率电阻器

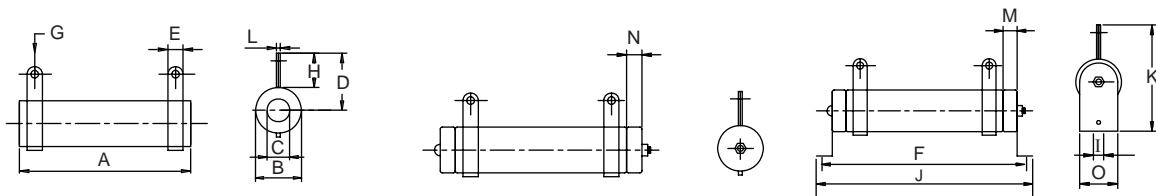
A tubular ceramic has two terminals, and is wound with copper wire or chromium alloy wire to provide the resistance and then coated with a high temperature, non-flammable resin. After the semi-finished part is cool and dry, insulation is applied through a high-temperature process and the mounts are attached. Since the winding is excellent, many taps can be added, impedance is low and the shape can be altered to produce many types.



DR series is suitable for educational modeling applications, load testing, industrial machinery, electric power distribution, instruments, automation control installations, etc. For custom specifications, please contact us to discuss the details.

### ► DDRA Type 10W ~ 1300W

### Tubular Ceramic, Fixed-type



| Wattage Rating | Dimensions (mm) |    |    |    |    |     |   |    |    |     |     |     |    |   |    | Resistance Range |
|----------------|-----------------|----|----|----|----|-----|---|----|----|-----|-----|-----|----|---|----|------------------|
|                | A               | B  | C  | D  | E  | F   | G | H  | I  | J   | K   | L   | M  | N | O  |                  |
| 10W            | 45              | 12 | 6  | 15 | 4  | 54  | 2 | 9  | 3  | 62  | 28  | 1.0 | -  | 6 | 10 | 1~3KΩ            |
| 20W            | 60              | 17 | 8  | 22 | 5  | 78  | 2 | 12 | 4  | 90  | 36  | 1.0 | -  | 6 | 16 | 1~7KΩ            |
| 30W            | 80              | 17 | 8  | 22 | 5  | 100 | 2 | 12 | 4  | 112 | 36  | 1.0 | -  | 6 | 16 | 1~10KΩ           |
| 40W            | 110             | 17 | 8  | 22 | 5  | 128 | 2 | 12 | 4  | 140 | 36  | 1.0 | -  | 6 | 16 | 1~13KΩ           |
| 50W            | 110             | 25 | 16 | 30 | 8  | 150 | 5 | 18 | 6  | 166 | 58  | 1.2 | 6  | - | 27 | 0.1~25KΩ         |
| 60W            | 90              | 28 | 18 | 32 | 8  | 130 | 5 | 19 | 6  | 146 | 60  | 1.2 | 6  | - | 27 | 0.1~30KΩ         |
| 80W            | 110             | 28 | 18 | 32 | 8  | 150 | 5 | 19 | 6  | 166 | 60  | 1.2 | 6  | - | 27 | 0.1~40KΩ         |
| 100W           | 140             | 28 | 18 | 32 | 8  | 180 | 5 | 19 | 6  | 196 | 60  | 1.2 | 6  | - | 27 | 0.1~50KΩ         |
| 120W           | 160             | 28 | 18 | 32 | 8  | 200 | 5 | 19 | 6  | 216 | 60  | 1.2 | 6  | - | 27 | 0.1~60KΩ         |
| 150W           | 195             | 28 | 18 | 32 | 8  | 235 | 5 | 19 | 6  | 251 | 60  | 1.2 | 6  | - | 27 | 0.3~75KΩ         |
| 160W           | 185             | 35 | 24 | 36 | 10 | 225 | 5 | 19 | 8  | 245 | 76  | 1.6 | 6  | - | 34 | 0.3~80KΩ         |
| 200W           | 210             | 35 | 24 | 36 | 10 | 250 | 5 | 19 | 8  | 274 | 76  | 1.6 | 6  | - | 34 | 0.3~100KΩ        |
| 250W           | 210             | 40 | 25 | 38 | 12 | 250 | 5 | 20 | 8  | 274 | 78  | 1.6 | 6  | - | 34 | 0.5~125KΩ        |
| 300W           | 260             | 40 | 25 | 38 | 12 | 300 | 5 | 20 | 8  | 320 | 78  | 1.6 | 6  | - | 34 | 0.5~150KΩ        |
| 400W           | 330             | 40 | 25 | 38 | 12 | 370 | 5 | 20 | 8  | 395 | 78  | 1.6 | 6  | - | 34 | 0.5~200KΩ        |
| 500W           | 330             | 50 | 35 | 50 | 12 | 380 | 6 | 25 | 9  | 400 | 100 | 1.6 | 8  | - | 40 | 0.5~250KΩ        |
| 600W           | 400             | 50 | 35 | 50 | 12 | 450 | 6 | 25 | 9  | 470 | 100 | 1.6 | 8  | - | 40 | 0.8~300KΩ        |
| 700W           | 460             | 50 | 35 | 50 | 12 | 510 | 6 | 25 | 9  | 530 | 100 | 1.6 | 8  | - | 40 | 0.8~350KΩ        |
| 800W           | 460             | 60 | 40 | 55 | 15 | 515 | 6 | 30 | 10 | 535 | 110 | 1.6 | 10 | - | 50 | 0.8~400KΩ        |
| 1000W          | 540             | 60 | 40 | 55 | 15 | 595 | 6 | 30 | 10 | 615 | 110 | 1.6 | 10 | - | 50 | 1~500KΩ          |
| 1300W          | 650             | 65 | 42 | 62 | 15 | 702 | 6 | 30 | 10 | 722 | 115 | 1.6 | 10 | - | 50 | 1~750KΩ          |

Notice: All dimensions might be changed or modified, please refer to last updating specification.

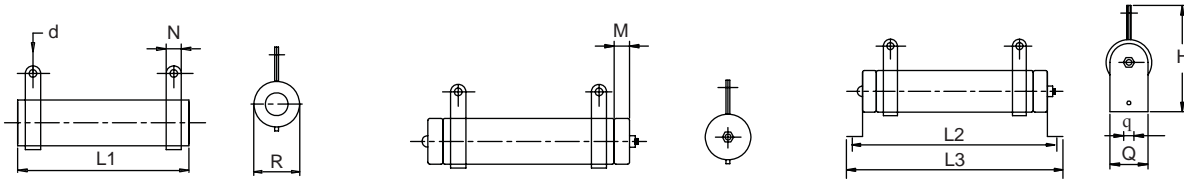




# Power Resistors

## ► DDRB Type 15W ~ 20000W

## Tubular Ceramic, Fixed-type



| Wattage Rating | Dimensions (mm) |      |      |      |     |    |     |     |     |     | Resistance Range |
|----------------|-----------------|------|------|------|-----|----|-----|-----|-----|-----|------------------|
|                | R               | L1   | L2   | L3   | H   | N  | d   | M   | q   | Q   |                  |
| 15W            | 15              | 45   | 65   | 85   | 40  | 6  | 3.5 | 3.5 | 4.5 | 15  | 1~1KΩ            |
| 20W            | 15              | 50   | 70   | 90   | 40  | 6  | 3.5 | 3.5 | 4.5 | 15  | 1~1KΩ            |
| 25W            | 20              | 50   | 80   | 100  | 50  | 6  | 3.5 | 5   | 5   | 20  | 2~1KΩ            |
| 30W            | 20              | 70   | 100  | 120  | 50  | 6  | 3.5 | 5   | 5   | 20  | 2~1KΩ            |
| 40W            | 20              | 87   | 115  | 137  | 50  | 6  | 3.5 | 5   | 5   | 20  | 2~1KΩ            |
| 50W            | 28              | 90   | 115  | 143  | 68  | 9  | 4.5 | 5.5 | 6   | 27  | 5~1KΩ            |
| 80W            | 28              | 90   | 115  | 143  | 68  | 9  | 4.5 | 5.5 | 6   | 27  | 5~2KΩ            |
| 100W           | 28              | 170  | 195  | 223  | 68  | 9  | 4.5 | 5.5 | 6   | 27  | 10~3KΩ           |
| 150W           | 28              | 215  | 240  | 268  | 68  | 9  | 4.5 | 5.5 | 6   | 27  | 10~3KΩ           |
| 200W           | 28              | 267  | 292  | 320  | 68  | 9  | 4.5 | 5.5 | 6   | 27  | 10~5KΩ           |
| 250W           | 28              | 267  | 292  | 320  | 68  | 9  | 4.5 | 5.5 | 6   | 27  | 10~5KΩ           |
| 300W           | 40              | 267  | 300  | 343  | 90  | 10 | 4.5 | 6   | 6   | 39  | 20~5KΩ           |
| 400W           | 40              | 330  | 365  | 406  | 90  | 10 | 4.5 | 6   | 6   | 39  | 20~5KΩ           |
| 500W           | 50              | 330  | 365  | 415  | 98  | 10 | 6   | 8.5 | 8   | 49  | 20~5KΩ           |
| 600W           | 50              | 330  | 365  | 415  | 98  | 10 | 6   | 8.5 | 8   | 49  | 20~5KΩ           |
| 700W           | 50              | 400  | 435  | 485  | 95  | 10 | 6   | 8.5 | 8   | 49  | 20~5KΩ           |
| 800W           | 70              | 300  | 320  | 362  | 138 | 15 | 8   | -   | 8   | 69  | 40~500Ω          |
| 1000W          | 70              | 300  | 320  | 362  | 138 | 15 | 8   | -   | 8   | 69  | 40~500Ω          |
| 1500W          | 70              | 415  | 435  | 477  | 138 | 15 | 8   | -   | 8   | 69  | 40~500Ω          |
| 2000W          | 70              | 510  | 530  | 572  | 138 | 15 | 8   | -   | 8   | 69  | 40~500Ω          |
| 2500W          | 70              | 600  | 620  | 662  | 138 | 15 | 8   | -   | 8   | 69  | 40~500Ω          |
| 3000W          | 70              | 600  | 620  | 662  | 138 | 15 | 8   | -   | 8   | 69  | 40~500Ω          |
| 4000W          | 100             | 430  | 450  | 521  | 185 | 15 | 8   | -   | 8   | 99  | 40~500Ω          |
| 5000W          | 100             | 500  | 620  | 691  | 185 | 15 | 8   | -   | 8   | 99  | 40~500Ω          |
| 6000W          | 100             | 600  | 720  | 791  | 185 | 15 | 8   | -   | 8   | 99  | 40~500Ω          |
| 10000W         | 150             | 600  | 625  | 720  | 350 | 30 | 8   | -   | 10  | 150 | 40~500Ω          |
| 12000W         | 150             | 660  | 685  | 780  | 350 | 30 | 8   | -   | 10  | 150 | 40~500Ω          |
| 15000W         | 150             | 660  | 685  | 780  | 350 | 30 | 8   | -   | 10  | 150 | 40~500Ω          |
| 20000W         | 150             | 1000 | 1030 | 1120 | 350 | 30 | 8   | -   | 10  | 150 | 40~500Ω          |

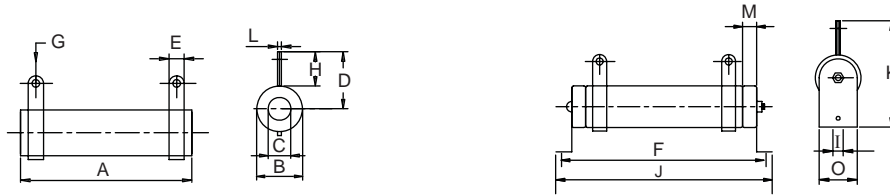
Notice: All dimensions might be changed or modified, please refer to last updating specification.



# Power Resistors

## ► DNRA Type 50W ~ 1300W

## Tubular Ceramic, Low Inductive



| Watage Rating | Dimensions (mm) |    |    |    |    |     |   |    |    |     |     |     |    |    | Resistance Range |
|---------------|-----------------|----|----|----|----|-----|---|----|----|-----|-----|-----|----|----|------------------|
|               | A               | B  | C  | D  | E  | F   | G | H  | I  | J   | K   | L   | M  | O  |                  |
| 50W           | 110             | 25 | 16 | 30 | 8  | 150 | 5 | 18 | 6  | 166 | 58  | 1.2 | 6  | 27 | 0.1~10KΩ         |
| 60W           | 90              | 28 | 18 | 32 | 8  | 130 | 5 | 19 | 6  | 146 | 60  | 1.2 | 6  | 27 | 0.1~12KΩ         |
| 80W           | 110             | 28 | 18 | 32 | 8  | 150 | 5 | 19 | 6  | 166 | 60  | 1.2 | 6  | 27 | 0.1~16KΩ         |
| 100W          | 140             | 28 | 18 | 32 | 8  | 180 | 5 | 19 | 6  | 196 | 60  | 1.2 | 6  | 27 | 0.1~20KΩ         |
| 120W          | 160             | 28 | 18 | 32 | 8  | 200 | 5 | 19 | 6  | 216 | 60  | 1.2 | 6  | 27 | 0.1~24KΩ         |
| 150W          | 195             | 28 | 18 | 32 | 8  | 235 | 5 | 19 | 6  | 251 | 60  | 1.2 | 6  | 27 | 0.3~3KΩ          |
| 160W          | 185             | 35 | 24 | 36 | 10 | 225 | 5 | 19 | 8  | 245 | 76  | 1.6 | 6  | 34 | 0.3~35KΩ         |
| 200W          | 210             | 35 | 24 | 36 | 10 | 250 | 5 | 19 | 8  | 274 | 76  | 1.6 | 6  | 34 | 0.3~40KΩ         |
| 250W          | 210             | 40 | 25 | 38 | 12 | 250 | 5 | 20 | 8  | 274 | 78  | 1.6 | 6  | 34 | 0.5~50KΩ         |
| 300W          | 260             | 40 | 25 | 38 | 12 | 300 | 5 | 20 | 8  | 320 | 78  | 1.6 | 6  | 34 | 0.5~60KΩ         |
| 400W          | 330             | 40 | 25 | 38 | 12 | 370 | 5 | 20 | 8  | 395 | 78  | 1.6 | 6  | 34 | 0.5~80KΩ         |
| 500W          | 330             | 50 | 35 | 50 | 12 | 380 | 6 | 25 | 9  | 400 | 100 | 1.6 | 8  | 40 | 0.5~100KΩ        |
| 600W          | 400             | 50 | 35 | 50 | 12 | 450 | 6 | 25 | 9  | 470 | 100 | 1.6 | 8  | 40 | 0.8~120KΩ        |
| 700W          | 460             | 50 | 35 | 50 | 12 | 510 | 6 | 25 | 9  | 530 | 100 | 1.6 | 8  | 40 | 0.8~140KΩ        |
| 800W          | 460             | 60 | 40 | 55 | 15 | 515 | 6 | 30 | 10 | 535 | 110 | 1.6 | 10 | 50 | 0.8~160KΩ        |
| 1000W         | 540             | 60 | 40 | 55 | 15 | 595 | 6 | 30 | 10 | 615 | 110 | 1.6 | 10 | 50 | 1~200KΩ          |
| 1300W         | 650             | 65 | 42 | 62 | 15 | 702 | 6 | 30 | 10 | 722 | 115 | 1.6 | 10 | 50 | 1~260KΩ          |

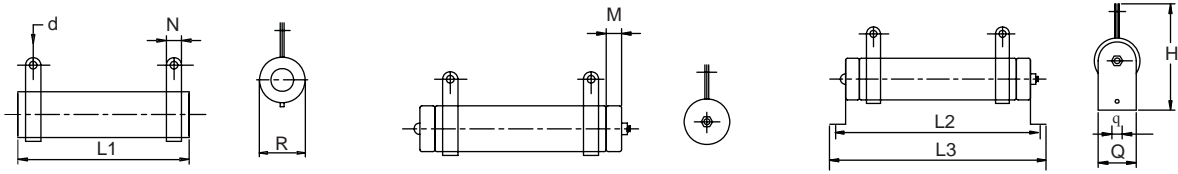
Notice: All dimensions might be changed or modified, please refer to last updating specification.



# Power Resistors

► DNRB Type 15W ~ 20000W

Tubular Ceramic, Low Inductive



| Wattage Rating | Dimensions (mm) |      |      |      |     |    |     |     |     |     | Resistance Range |
|----------------|-----------------|------|------|------|-----|----|-----|-----|-----|-----|------------------|
|                | R               | L1   | L2   | L3   | H   | N  | d   | M   | q   | Q   |                  |
| 15W            | 15              | 45   | 65   | 85   | 40  | 6  | 3.5 | 3.5 | 4.5 | 15  | 1~1KΩ            |
| 20W            | 15              | 50   | 70   | 90   | 40  | 6  | 3.5 | 3.5 | 4.5 | 15  | 1~1KΩ            |
| 25W            | 20              | 50   | 80   | 100  | 50  | 6  | 3.5 | 5   | 5   | 20  | 2~1KΩ            |
| 30W            | 20              | 70   | 100  | 120  | 50  | 6  | 3.5 | 5   | 5   | 20  | 2~1KΩ            |
| 40W            | 20              | 87   | 115  | 137  | 50  | 6  | 3.5 | 5   | 5   | 20  | 2~1KΩ            |
| 50W            | 28              | 90   | 115  | 143  | 68  | 9  | 4.5 | 5.5 | 6   | 27  | 5~1KΩ            |
| 80W            | 28              | 90   | 115  | 143  | 68  | 9  | 4.5 | 5.5 | 6   | 27  | 5~2KΩ            |
| 100W           | 28              | 170  | 195  | 223  | 68  | 9  | 4.5 | 5.5 | 6   | 27  | 10~3KΩ           |
| 150W           | 28              | 215  | 240  | 268  | 68  | 9  | 4.5 | 5.5 | 6   | 27  | 10~3KΩ           |
| 200W           | 28              | 267  | 292  | 320  | 68  | 9  | 4.5 | 5.5 | 6   | 27  | 10~5KΩ           |
| 250W           | 28              | 267  | 292  | 320  | 68  | 9  | 4.5 | 5.5 | 6   | 27  | 10~5KΩ           |
| 300W           | 40              | 267  | 300  | 343  | 90  | 10 | 4.5 | 6   | 6   | 39  | 20~5KΩ           |
| 400W           | 40              | 330  | 365  | 406  | 90  | 10 | 4.5 | 6   | 6   | 39  | 20~5KΩ           |
| 500W           | 50              | 330  | 365  | 415  | 98  | 10 | 6   | 8.5 | 8   | 49  | 20~5KΩ           |
| 600W           | 50              | 330  | 365  | 415  | 98  | 10 | 6   | 8.5 | 8   | 49  | 20~5KΩ           |
| 700W           | 50              | 400  | 435  | 485  | 95  | 10 | 6   | 8.5 | 8   | 49  | 20~5KΩ           |
| 800W           | 70              | 300  | 320  | 362  | 138 | 15 | 8   | -   | 8   | 69  | 40~500Ω          |
| 1000W          | 70              | 300  | 320  | 362  | 138 | 15 | 8   | -   | 8   | 69  | 40~500Ω          |
| 1500W          | 70              | 415  | 435  | 477  | 138 | 15 | 8   | -   | 8   | 69  | 40~500Ω          |
| 2000W          | 70              | 510  | 530  | 572  | 138 | 15 | 8   | -   | 8   | 69  | 40~500Ω          |
| 2500W          | 70              | 600  | 620  | 662  | 138 | 15 | 8   | -   | 8   | 69  | 40~500Ω          |
| 3000W          | 70              | 600  | 620  | 662  | 138 | 15 | 8   | -   | 8   | 69  | 40~500Ω          |
| 4000W          | 100             | 430  | 450  | 521  | 185 | 15 | 8   | -   | 8   | 99  | 40~500Ω          |
| 5000W          | 100             | 500  | 620  | 691  | 185 | 15 | 8   | -   | 8   | 99  | 40~500Ω          |
| 6000W          | 100             | 600  | 720  | 791  | 185 | 15 | 8   | -   | 8   | 99  | 40~500Ω          |
| 10000W         | 150             | 600  | 625  | 720  | 350 | 30 | 8   | -   | 10  | 150 | 40~500Ω          |
| 12000W         | 150             | 660  | 685  | 780  | 350 | 30 | 8   | -   | 10  | 150 | 40~500Ω          |
| 15000W         | 150             | 660  | 685  | 780  | 350 | 30 | 8   | -   | 10  | 150 | 40~500Ω          |
| 20000W         | 150             | 1000 | 1030 | 1120 | 350 | 30 | 8   | -   | 10  | 150 | 40~500Ω          |

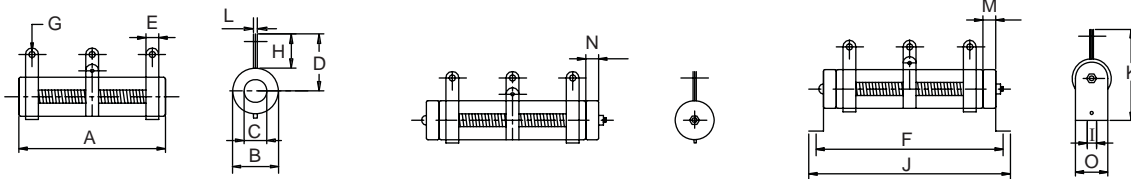
Notice: All dimensions might be changed or modified, please refer to last updating specification.



# Power Resistors

## DSRA Type 20W ~ 1300W

## Tubular Ceramic, Variable



| Wattage Rating | Dimensions (mm) |    |    |    |    |     |   |    |    |     |     |     |    |   |    | Resistance Range |
|----------------|-----------------|----|----|----|----|-----|---|----|----|-----|-----|-----|----|---|----|------------------|
|                | A               | B  | C  | D  | E  | F   | G | H  | I  | J   | K   | L   | M  | N | O  |                  |
| 20W            | 60              | 17 | 8  | 22 | 5  | 78  | 2 | 12 | 4  | 90  | 36  | 1.0 | -  | 6 | 16 | 1~1KΩ            |
| 30W            | 80              | 17 | 8  | 22 | 5  | 100 | 2 | 12 | 4  | 112 | 36  | 1.0 | -  | 6 | 16 | 1~1.5KΩ          |
| 40W            | 110             | 17 | 8  | 22 | 5  | 128 | 2 | 12 | 4  | 140 | 36  | 1.0 | -  | 6 | 16 | 1~2KΩ            |
| 50W            | 110             | 25 | 16 | 30 | 8  | 150 | 5 | 18 | 6  | 166 | 58  | 1.2 | 6  | - | 27 | 0.1~5KΩ          |
| 60W            | 90              | 28 | 18 | 32 | 8  | 130 | 5 | 19 | 6  | 146 | 60  | 1.2 | 6  | - | 27 | 0.1~6KΩ          |
| 80W            | 110             | 28 | 18 | 32 | 8  | 150 | 5 | 19 | 6  | 166 | 60  | 1.2 | 6  | - | 27 | 0.1~8KΩ          |
| 100W           | 140             | 28 | 18 | 32 | 8  | 180 | 5 | 19 | 6  | 196 | 60  | 1.2 | 6  | - | 27 | 0.1~10KΩ         |
| 120W           | 160             | 28 | 18 | 32 | 8  | 200 | 5 | 19 | 6  | 216 | 60  | 1.2 | 6  | - | 27 | 0.1~12KΩ         |
| 150W           | 195             | 28 | 18 | 32 | 8  | 235 | 5 | 19 | 6  | 251 | 60  | 1.2 | 6  | - | 27 | 0.3~15KΩ         |
| 160W           | 185             | 35 | 24 | 36 | 10 | 225 | 5 | 19 | 8  | 245 | 76  | 1.6 | 6  | - | 34 | 0.3~16KΩ         |
| 200W           | 210             | 35 | 24 | 36 | 10 | 250 | 5 | 19 | 8  | 274 | 76  | 1.6 | 6  | - | 34 | 0.3~20KΩ         |
| 250W           | 210             | 40 | 25 | 38 | 12 | 250 | 5 | 20 | 8  | 274 | 78  | 1.6 | 6  | - | 34 | 0.5~25KΩ         |
| 300W           | 260             | 40 | 25 | 38 | 12 | 300 | 5 | 20 | 8  | 320 | 78  | 1.6 | 6  | - | 34 | 0.5~30KΩ         |
| 400W           | 330             | 40 | 25 | 38 | 12 | 370 | 5 | 20 | 8  | 395 | 78  | 1.6 | 6  | - | 34 | 0.5~40KΩ         |
| 500W           | 330             | 50 | 35 | 50 | 12 | 380 | 6 | 25 | 9  | 400 | 100 | 1.6 | 8  | - | 40 | 0.5~50KΩ         |
| 600W           | 400             | 50 | 35 | 50 | 12 | 450 | 6 | 25 | 9  | 470 | 100 | 1.6 | 8  | - | 40 | 0.8~60KΩ         |
| 700W           | 460             | 50 | 35 | 50 | 12 | 510 | 6 | 25 | 9  | 530 | 100 | 1.6 | 8  | - | 40 | 0.8~70KΩ         |
| 800W           | 460             | 60 | 40 | 55 | 15 | 515 | 6 | 30 | 10 | 535 | 110 | 1.6 | 10 | - | 50 | 0.8~80KΩ         |
| 1000W          | 540             | 60 | 40 | 55 | 15 | 595 | 6 | 30 | 10 | 615 | 110 | 1.6 | 10 | - | 50 | 1~100KΩ          |
| 1300W          | 650             | 65 | 42 | 62 | 15 | 702 | 6 | 30 | 10 | 722 | 115 | 1.6 | 10 | - | 50 | 1~130KΩ          |

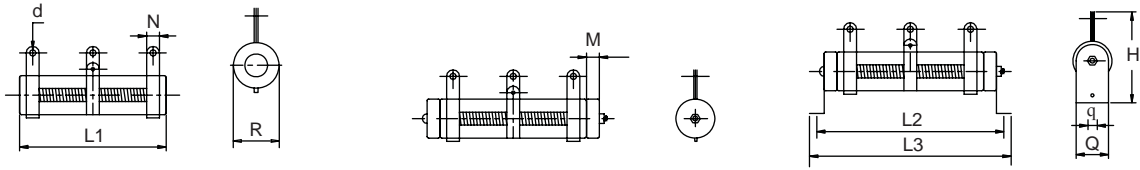
Notice: All dimensions might be changed or modified, please refer to last updating specification.



# Power Resistors

## ► DSRB Type 15W ~ 20000W

## Tubular Ceramic, Variable



| Wattage Rating | Dimensions (mm) |      |      |      |     |    |     |     |     |     | Resistance Range |
|----------------|-----------------|------|------|------|-----|----|-----|-----|-----|-----|------------------|
|                | R               | L1   | L2   | L3   | H   | N  | d   | M   | q   | Q   |                  |
| 15W            | 15              | 45   | 65   | 85   | 40  | 6  | 3.5 | 3.5 | 4.5 | 15  | 1~1KΩ            |
| 20W            | 15              | 50   | 70   | 90   | 40  | 6  | 3.5 | 3.5 | 4.5 | 15  | 1~1KΩ            |
| 25W            | 20              | 50   | 80   | 100  | 50  | 6  | 3.5 | 5   | 5   | 20  | 2~1KΩ            |
| 30W            | 20              | 70   | 100  | 120  | 50  | 6  | 3.5 | 5   | 5   | 20  | 2~1KΩ            |
| 40W            | 20              | 87   | 115  | 137  | 50  | 6  | 3.5 | 5   | 5   | 20  | 2~1KΩ            |
| 50W            | 28              | 90   | 115  | 143  | 68  | 9  | 4.5 | 5.5 | 6   | 27  | 5~1KΩ            |
| 80W            | 28              | 90   | 115  | 143  | 68  | 9  | 4.5 | 5.5 | 6   | 27  | 5~2KΩ            |
| 100W           | 28              | 170  | 195  | 223  | 68  | 9  | 4.5 | 5.5 | 6   | 27  | 10~3KΩ           |
| 150W           | 28              | 215  | 240  | 268  | 68  | 9  | 4.5 | 5.5 | 6   | 27  | 10~3KΩ           |
| 200W           | 28              | 267  | 292  | 320  | 68  | 9  | 4.5 | 5.5 | 6   | 27  | 10~5KΩ           |
| 250W           | 28              | 267  | 292  | 320  | 68  | 9  | 4.5 | 5.5 | 6   | 27  | 10~5KΩ           |
| 300W           | 40              | 267  | 300  | 343  | 90  | 10 | 4.5 | 6   | 6   | 39  | 20~5KΩ           |
| 400W           | 40              | 330  | 365  | 406  | 90  | 10 | 4.5 | 6   | 6   | 39  | 20~5KΩ           |
| 500W           | 50              | 330  | 365  | 415  | 98  | 10 | 6   | 8.5 | 8   | 49  | 20~5KΩ           |
| 600W           | 50              | 330  | 365  | 415  | 98  | 10 | 6   | 8.5 | 8   | 49  | 20~5KΩ           |
| 700W           | 50              | 400  | 435  | 485  | 95  | 10 | 6   | 8.5 | 8   | 49  | 20~5KΩ           |
| 800W           | 70              | 300  | 320  | 362  | 138 | 15 | 8   | -   | 8   | 69  | 40~500Ω          |
| 1000W          | 70              | 300  | 320  | 362  | 138 | 15 | 8   | -   | 8   | 69  | 40~500Ω          |
| 1500W          | 70              | 415  | 435  | 477  | 138 | 15 | 8   | -   | 8   | 69  | 40~500Ω          |
| 2000W          | 70              | 510  | 530  | 572  | 138 | 15 | 8   | -   | 8   | 69  | 40~500Ω          |
| 2500W          | 70              | 600  | 620  | 662  | 138 | 15 | 8   | -   | 8   | 69  | 40~500Ω          |
| 3000W          | 70              | 600  | 620  | 662  | 138 | 15 | 8   | -   | 8   | 69  | 40~500Ω          |
| 4000W          | 100             | 430  | 450  | 521  | 185 | 15 | 8   | -   | 8   | 99  | 40~500Ω          |
| 5000W          | 100             | 500  | 620  | 691  | 185 | 15 | 8   | -   | 8   | 99  | 40~500Ω          |
| 6000W          | 100             | 600  | 720  | 791  | 185 | 15 | 8   | -   | 8   | 99  | 40~500Ω          |
| 10000W         | 150             | 600  | 625  | 720  | 350 | 30 | 8   | -   | 10  | 150 | 40~500Ω          |
| 12000W         | 150             | 660  | 685  | 780  | 350 | 30 | 8   | -   | 10  | 150 | 40~500Ω          |
| 15000W         | 150             | 660  | 685  | 780  | 350 | 30 | 8   | -   | 10  | 150 | 40~500Ω          |
| 20000W         | 150             | 1000 | 1030 | 1120 | 350 | 30 | 8   | -   | 10  | 150 | 40~500Ω          |

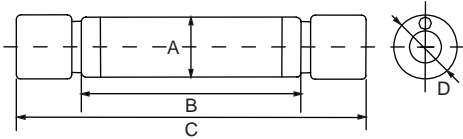
Notice: All dimensions might be changed or modified, please refer to last updating specification.



# Power Resistors

## ▶ DCR Type 100W ~ 250W

## Tubular Ceramic, C - shaped



| Wattage Rating | Dimensions (mm) |     |     |    | Resistance Range |
|----------------|-----------------|-----|-----|----|------------------|
|                | A               | B   | C   | D  |                  |
| 100W           | 28              | 140 | 165 | 30 | 20~20KΩ          |
| 120W           | 28              | 165 | 190 | 30 | 25~25KΩ          |
| 150W           | 28              | 195 | 220 | 30 | 30~30KΩ          |
| 200W           | 28              | 254 | 279 | 30 | 35~35KΩ          |
| 250W           | 28              | 300 | 325 | 30 | 40~40KΩ          |

Notice: All dimensions might be changed or modified, please refer to last updating specification.

## ▶ Performance Specifications

| Test Item                       | Test Methods   | Characteristics  |
|---------------------------------|--|--|
| Resistance tolerance            | JIS-C-5202 5-1   | Resistance Nominal Tolerance<br>$1 \leq R$ $1 > R$ $\pm 5\%(J) \pm 10\%(K)$                                    |
| Temperature coefficient         | JIS-C-5202 5-2   | $\pm 200$ PPM/ $^{\circ}C$ MAX   |
| Load rating                     | JIS-C-5202 5-4   | $\Delta R/R \leq \pm(0.5\% + 0.1\Omega)$ Surface temperature up to $350^{\circ}C$ MAX                          |
| Short-term overload             | JIS-C-5202 5-5<br>1000% rated wattage 5 seconds  | Free of appearance or structural irregularity<br>$\Delta R/R \leq \pm(2\% + 0.1\Omega)$                        |
| Insulation resistance           | JIS-C-5202 5-6 500VDC  | 100MΩ min  |
| Dielectric withstanding voltage | JIS-C-5202 5-7<br>1000VDC 1 minute Between terminal and anchor stand   | Free of appearance or structural irregularity<br>$\Delta R/R \leq \pm(0.1\% + 0.05\Omega)$                     |
| Terminal strength               | JIS-C-5202 6-1 8kg 30 seconds  | Free of appearance or structural irregularity  |
| Vibration                       | JIS-C-5202 6-3<br>1.5m/m 10 ~ 50 ~ 10 Hz/min X-Y-Z<br>2 hours each   | Free of appearance or structural irregularity<br>Surface coating crack $\Delta R/R \leq \pm(1\% + 0.05\Omega)$ |
| Thermal shock                   | JIS-C-5202 7-3<br>Room temp 30 minutes ON- $55^{\circ}C$<br>15 minutes OFF   | Free of structural irregularity<br>$\Delta R/R \leq \pm(2\% + 0.1\Omega)$                                      |
| Humidity                        | JIS-C-5202 7-5<br>$40^{\circ}C$ 90%RH 240 hours  | Free of appearance or structural irregularity<br>Surface coating crack $\Delta R/R \leq \pm(3\% + 0.1\Omega)$  |
| Load life                       | JIS-C-5202 7-10<br>90 minutes ON - 30 minutes OFF 500 hours  | Free of appearance or structural irregularity<br>Surface coating crack $\Delta R/R \leq \pm(1\% + 0.05\Omega)$ |
| Flame retardation               | JIS-C-5202 7-13-3-2<br>100% - 600% rated wattage load  | US UL-94 flame retardation test V-0 grade noncombustible   |
| REMARKS:                        | 1. Resistance and resistance tolerance were tested in-house with micro resistance meter.<br>2. Coating refers to UL-certified data provided by supplier. |  |



# Power Resistors

## ► How to Order

- DNRA   
 600W   
 500R   
 J   
 G

- ①** Product type: DDRA type  
 DDRB type  
 DNRA type  
 DNRB type  
 DSRA type  
 DSRB type  
 DCR type

- ②** Rated wattage: 10W~1300W  
 15W~20000W  
 50W~1300W  
 15W~20000W  
 20W~1300W  
 15W~20000W  
 100W~250W

- ③** Resistance value( $\Omega$ ) : ( $\Omega$ )  
 indicates resistance  
 value in units of ohms.

- ④** Resistance tolerance

| Code | Resistance tolerance |
|------|----------------------|
| J    | $\pm 5\%$            |
| K    | $\pm 10\%$           |

- ⑤** Assembly Method

| Code | Assembly Method   |
|------|-------------------|
| C    | Clip Mount.       |
| G    | Horizontal Mount. |
| N    | No Mount.         |
| Z    | Vertical Mount.   |

